

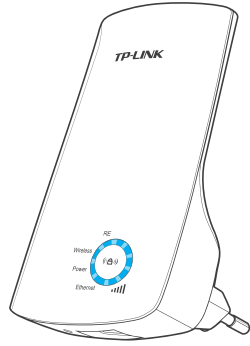
# Quick Installation Guide

Applicable Models:

**TL-WA850RE & TL-WA750RE**

**WPS Method ONE:** Quick Setup using the WPS Button

**Method TWO:** Setup using your Web Browser



7106504652 REV1.1.1

## Wireless

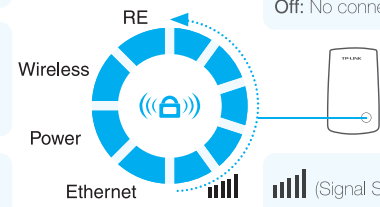
**Flashing:** The wireless function of TL-WA850RE is enabled.  
**Off:** The wireless function of TL-WA850RE is disabled.

## Power

**On:** TL-WA850RE is on.  
**Off:** TL-WA850RE is off.

## Ethernet

**On:** A device is connected to the ETHERNET port, but there is no activity.  
**Flashing:** A device is connected to the ETHERNET port, and is active.  
**Off:** No device is connected to the ETHERNET port.



## RE

**On:** A secure connection has been established.  
**Flashing:** TL-WA850RE is establishing a secure connection.  
**Off:** No connection is active.

(Signal Strength)

**On(1-5):** TL-WA850RE is connected to the router. More LEDs indicate a better connection between TL-WA850RE and the router.  
**Off:** TL-WA850RE isn't connected to the router.

## Method ONE

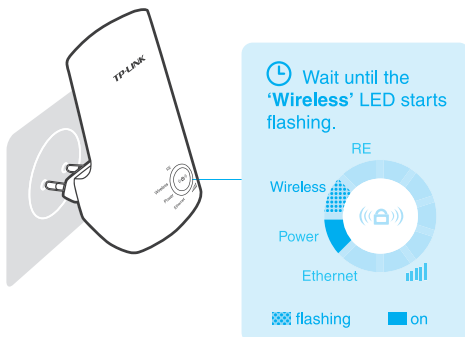
### Quick Setup using the WPS Button

Use this if your Router or Access Point(AP) supports WPS

1

## Power on

Plug your TL-WA850RE into a power outlet near your Router/AP.

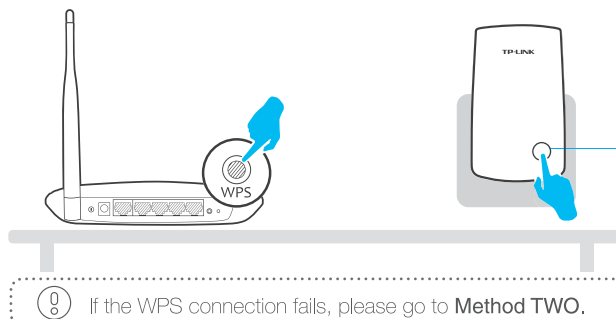


2

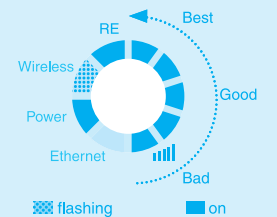
## Push the two WPS buttons

① Push the WPS button on your Router/AP.

② Immediately push the (WPS) button on your TL-WA850RE.



The 'RE' LED should go from flashing to solid in about 2 minutes. Wait until several 'Signal Strength' LEDs (Signal Strength) turn on.

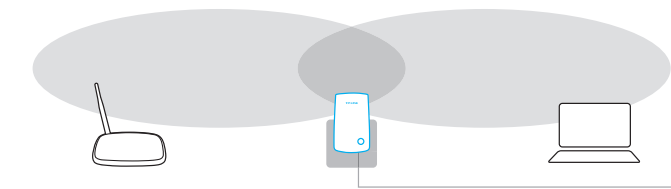


3

## Relocate

Once your TL-WA850RE is properly configured, you can move it to a more ideal location for optimal signal quality and coverage.

Once placed in another power outlet, the extender will **reconnect to the main Router/AP automatically** in about 30 seconds. \* Keep these in mind:



The ideal location for your extender is **Halfway** between your wireless router and Wi-Fi enabled devices.



Make sure your extender is in a location where a minimum of **3 signal strength LEDs** are lit.

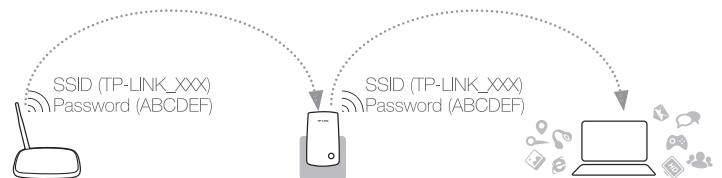


Keep the extender away from devices like cordless phones, Bluetooth devices and Microwave Ovens to minimize wireless interference.

If possible, try to place your extender in **open corridors or spacious locations** rather than a crowded room.

## Enjoy!

The TL-WA850RE **shares** the same Wi-Fi network name (SSID) and Wi-Fi password with your main Router/AP.



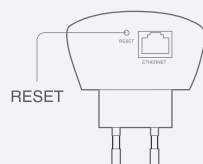
## Frequently Asked Questions (FAQ)

### Q1. How to reset the TL-WA850RE?

A1: While the TL-WA850RE is plugged into a power outlet, use a pin to press the **RESET** button for 2 seconds. Wait 5 seconds until all the LEDs flash once.

OR

A2: Log into the management page via your web browser, then go to **"System Tools -> Factory Defaults"** and click **"Restore"**. Wait 5 seconds until all of the TL-WA850RE's LEDs flash once.



### Q2. I typed http://tplinkextender.net in the browser URL bar, why can't I see the quick setup page?

A: First, make sure your computer is connected to the extender network and disconnected from any other network. Second, make sure your computer is set to **"Obtain an IP address automatically"**.

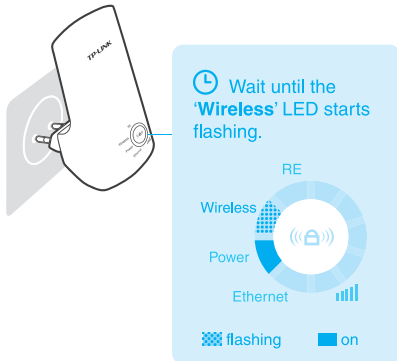
### Q3. What's the technical support hotline?

A: Please visit **"www.tp-link.com"**, find **"Support>Contact Technical Support>Hotline Support"** for more information.

## Method TWO Setup using your Web Browser

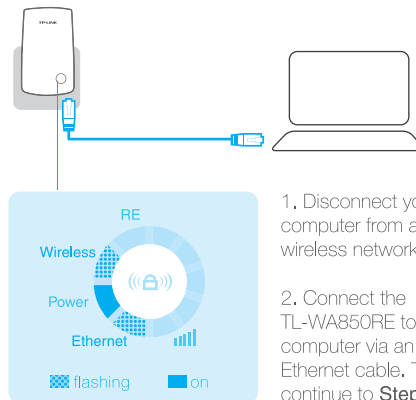
### 1 Power on

Plug your TL-WA850RE into a power outlet near your Router/AP.

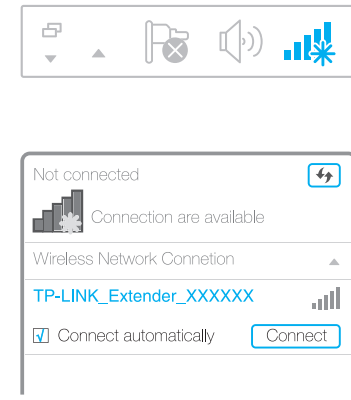


### 2 Connect your computer to the TL-WA850RE

Connecting via Ethernet Cable

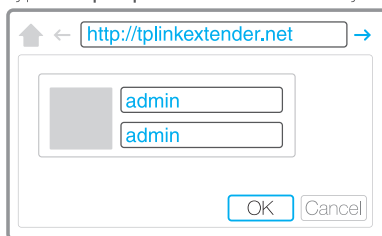


Connecting via Wireless



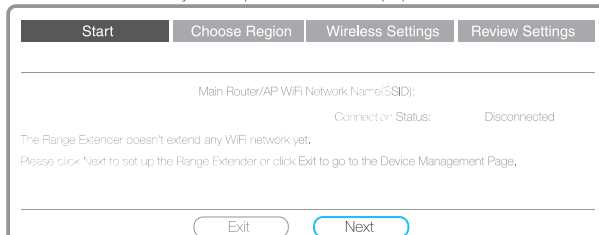
### 3 Configuration via your Web Browser

1 Type "http://tplinkextender.net" in your Web browser and press Enter. Log in to the management page using user name "admin" and password "admin".

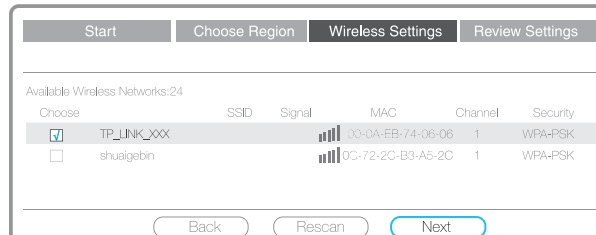


It may take 5 seconds or more for the login page to pop up. If it does not pop up, refresh the browser, otherwise, please refer to the FAQ > Q2.

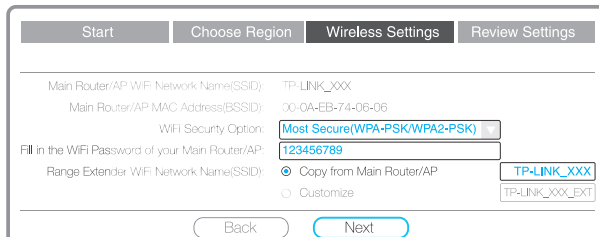
2 Below are the major steps of the setup process.



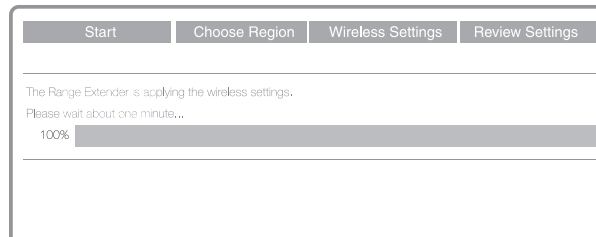
a. After logging in, you will see the Quick Setup page.



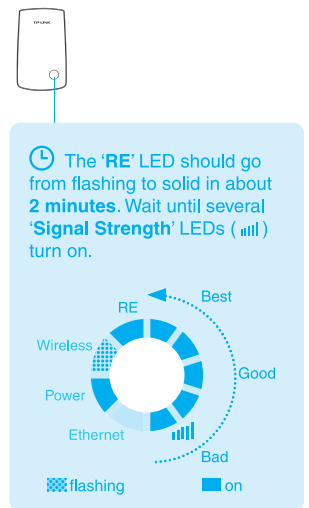
b. Select your Router/AP's Wi-Fi network, for example, TP\_LINK\_XXX.



c. Fill in the Wi-Fi Password of your main Router/AP. The TL-WA850RE's Wi-Fi network name (SSID) can be copied from your main Router/AP name (TP-LINK\_XXX) OR BE CUSTOMIZED A NEW ONE (TP-LINK\_XXX\_EXT).



d. After completing the configuration, check the LED lights. Several signal strength LEDs will light up if the configuration is successful.

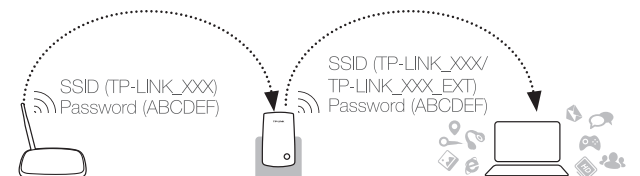


### 4 Relocate

Flip this piece of paper. Please refer to Step 3 of Method ONE.

### Enjoy!

Choose TL-WA850RE's Wi-Fi network name (TP-LINK\_XXX or TP-LINK\_XXX\_EXT). The TL-WA850RE shares the same Wi-Fi password with your main Router/AP.



### Entertainment Adapter

The TL-WA850RE's single Ethernet port allows the Range Extender to function as a wireless adapter connecting a wired device like Blu-ray players, game consoles, DVRs and smart TVs. At the same time, the device can share the wireless network. Please follow Method ONE or Method TWO to set up the TL-WA850RE first and then refer to the connection diagram to connect to one Ethernet-enabled device.

