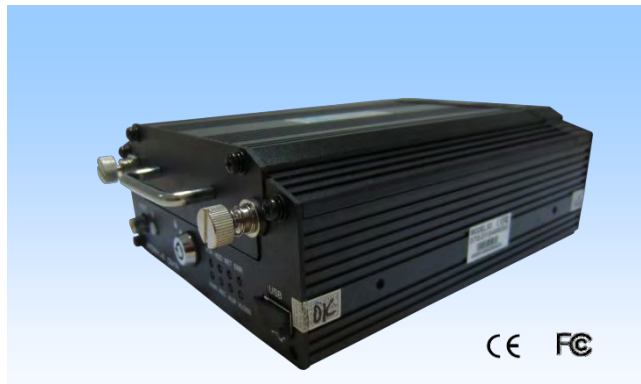


# MDVR-X3 II-4CH

Mobile Digital Video Recorder



## Main Features

- ◆ Revolutionary anti-vibration for 360 degree installation
- ◆ Built-in capacitor provides MDVR with enough time to pack the files to avoid any video files loss when the external power is cut off suddenly
- ◆ Supports 2.5" 1TB hard disk storage and SD card for mirror recording
- ◆ 100% metal material
- ◆ Total resources: 4 channels D1 at real time(100fps/ 120fps)
- ◆ Built-in GPS for location tracking
- ◆ Built-in WIFI for video files and alarm files download
- ◆ Built-in 3G for live view and remote management
- ◆ Patented FS 3.0 file system for data reliability and data recovery
- ◆ Pre-recording maximum 60 minutes
- ◆ Low voltage protection

## Overview

MDVR-X3-II-4CH is a functional Mobile Digital Video Recorder specially designed for vehicle video surveillance and remote monitoring. It supports video recording in CIF, HD1 and D1 formats, supports vehicle travel info recording and wireless data upload. With center software it also achieves alarm linkage central monitoring, remote management and playback analysis. It is easy to use with simple design, multi-functions, superior anti-vibration, flexible installation and high reliability.

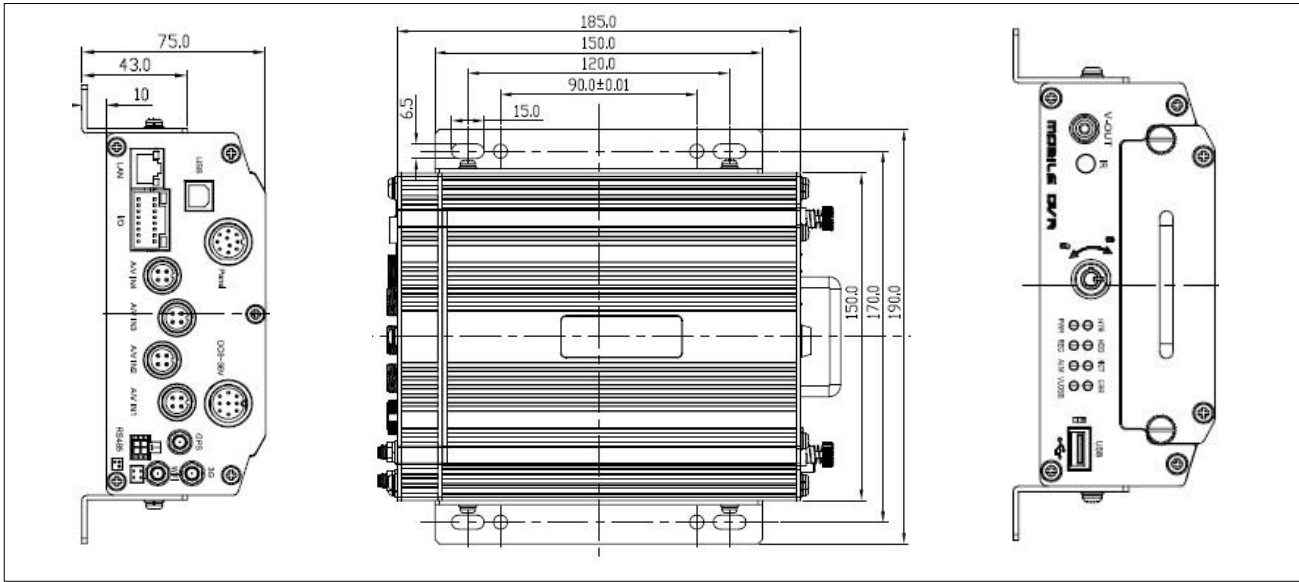
## Specification

<b>Function Overview</b>		Live view recording, playback, network, GPS location tracking
<b>System</b>	OS	Embedded real-time Linux
	Control Mode	IR remote control, control panel, network, CP3
<b>Video</b>	Input	4 channels (Aviation-din X4)
	Output	1 channel (Aviation-din or RCA)
	Video System	NTSC/PAL
<b>Audio</b>	Input	4 channels (Aviation-din X4) (Note: The frame rate setup must be above 6fps)
	Output	1 channels (Aviation-din or RCA)
<b>Display</b>	Display Split	1/4
	OSD	GPS information, alarm, temperature, acceleration, voltage, firmware version, MCU version, device information, network information
	Operation Interface	Semi-transparent GUI
<b>Recording</b>	Video/Audio Compression	H.264/ADPCM
	Image Resolution	PAL: D1 (704*576), HD1 (704*288), CIF (352*288) NTSC: D1 (704*480), HD1 (704*240), CIF (352*240)
	Image Quality	1~8 levels adjustable (1 is the best)
	Recording Mode	General/schedule/alarm/ (sensor trigger, speed, video loss)
	File Packing Time	15/30/45/60 minutes optional
	Pre-recording	Maximum 60 minutes
	Post-recording	Maximum 30 minutes
	Mirror Recording	Yes
<b>Playback &amp; Backup</b>	Playback Channel	1/4 (1 channel by local playback, 4 channels by playback software)
	Search Mode	Date/time, channel, file type
	Backup Mode	USB, network
<b>Network</b>	Ethernet	RJ45 port (10/100M)
	3G	HSPA/EVDO (optional)
	WIFI	802.11b/g/n (optional)
	GPS	GPS location tracking, speed detection and sync time
<b>Storage</b>	HDD	Maximum 1TB 2.5" hard disk>>>>>
<b>Interface</b>	USB	USB 2.0 × 2
	RS485	RS485 × 1
	Sensor	8 inputs, 2 outputs
	UPS	Uninterrupted power supply for MDVR
<b>Power</b>	Input	8 ~36 V
	Output	12V@2A; 5V@1A

Consumption

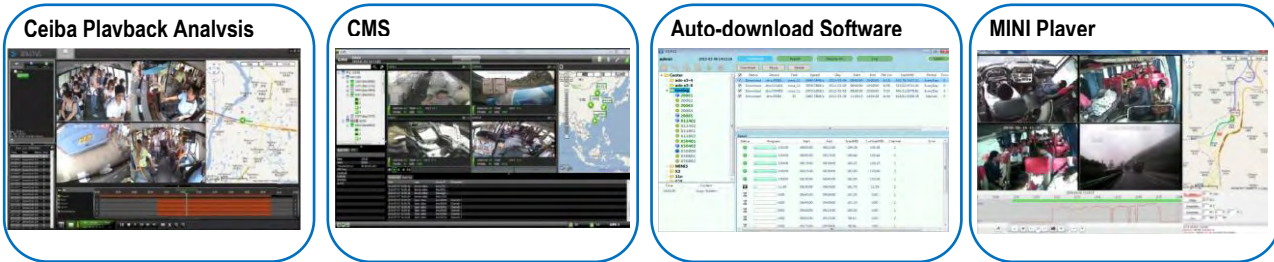
12W (without cameras and any accessories)

Dimension (unit: mm)



<b>Physical Characteristic</b>	Dimension (L × W × H)	185mm × 170mm × 75mm
	Weight	2kg
<b>Environment</b>	Operating Temperature	-25°C ~ +60°C (Please use built-in heater if the temperature is below 0°C)
	Operating Relative Humidity	10%~90%

PC Software



Optional Accessories

