

DB51

Mini Metal Dome Camera

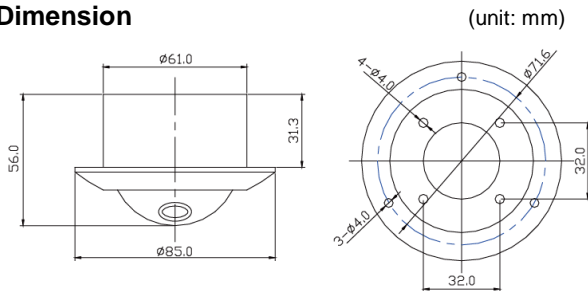


DB51 is the Mini Metal Dome Camera specially designed for public bus, school bus, passenger transport. The special structure (for wall and in-ceiling mount), automatic shutter control and white balance and low power consumption make this dome camera ideal for vehicle surveillance.

Key Features

- Metal-cased IP67 weatherproof micro dome
- For Wall and In-ceiling Mount
- 1/3" Colour Board Camera with Super HAD II CCD
- Integrated lens F2.0/3.6mm
- Resolution: 480/600/700TV lines
- 10 Infrared LEDs, vision range 10 meters
- Low power consumption
- Automatic Shutter Control up to 1:100,000Sec
- Digital Signal Processing (DSP)
- Automatic White Balance (ATW)
- Anti-vibration, vandal resistant
- Silver-coloured Aluminium Casing

Dimension



Package contains

- Camera x 1
- Instruction manual x 1
- Mounting plug x 3
- M3.5 self-tapping screw x 3

Technical Specifications

Product series	Indoor Dome Camera	
Model	DB51	
Imaging Device	1/3" Color SONY Super HAD II CCD	
TV System	NTSC/PAL	
Effective Pixels (PAL/NTSC)	752(H) x 582(V) 768(H) x 494(V)	960(H) x 582(V) 976(H) x 494(V)
Horizontal Resolution	600 TV lines	700 TV lines
Minimum Illumination	0 Lux at F1.2 (Infrared LED on)	
Scanning System	2:1 Interlace	
Synchronization	Internal	
S/N Ratio	≥ 50 dB (AGC off)	
Auto Gain Control	Auto	
White Balance	Auto	
Automatic Shutter (AES)	1/50~1/100,000sec	
Back Light Compensation	Auto	
Aperture Correction (APC)	Horizontal and Vertical	
IR LED	10 LEDs with 850nm	
IR night vision	5 ~ 8 meter	
Video Output	1 Vp-p, 75Ω Composite, BNC x 1	
Audio	Optional	
Mirror	Optional	
Gamma Ratio	0.45	
Lens	F2.0/f3.6mm (2.8/6.0mm optional)	
Camera adjustment	3-axis camera adjustment: 360° horizontal rotation / 0-40° tilt rotation, 360° pan rotation	
Exterior Focus Adjustment	N/A	
Lens Mount	M12XP0.5mm Thread	
Viewing Angle (D)	110°	
Mounting	flush mount, wall mount	
Housing material	Aluminium	
Input Voltage / Current	12V DC ±10%	
Power Consumption	80mA	
Dimensions (W x H)	ø 85 x 56 mm / ø 3.346" x 2.205"	
Net Weight	130g / 0.2866lbs	
Weatherproof	IP67	
Working Temperature	-10°C~ +50°C / 14°F ~ +122°F	
Working Humidity	RH90% Max.	
Certification	CE	